

A Treatment Protocol for Autistic Spectrum Disorders (ASD)



Dietrich Klinghardt MD, PhD

My experience...

- ✓ Treated numerous cases of children and adults diagnosed with conditions on the autistic spectrum successfully in both Europe and North America
- ✓ Read the very practical information provided by www.DefeatAutismYesterday.org (Dana Gorman)
- ✓ Read written material from the “Autism Research Institute” (ph) 619-281-7165
- ✓ Studied a number of scientific papers on the subject
- ✓ Carefully listened to my patients
- ✓ Gained much knowledge from my own diagnostic technique, autonomic response testing (ART)

- Joachim Mutter: **Mercury and Autism: Accelerating Evidence.** Neuroendocrinol Lett 2005; 26 (5): 439-446, Institute for Environmental Medicine and Hospital Epidemiology, University Hospital Freiburg, Germany.
 - Collaborated with me for many years and works at my Alma Mater in Freiburg, Germany.
 - E-mail: joachim.mutter@uniklinik-freiburg.de

2

- Autonomic Response Testing
 - Every parent should learn it to help in the difficult daily decision making process
 - Has helped to guide researchers world wide to look in the right direction
 - Alternatives: EAV (i.e. MSA)

- Current recommended lab testing for biochemical markers
 - Mostly only available to a wealthy elite
 - Misguided in that it looks at the outcome of a toxic insult, not at the cause
 - There is still no reliable in-vivo test that can determine the body burden of mercury or any other toxin
 - Has not led to the necessary political and judicial action
 - We have knowingly sacrificed numerous generations of children in order to protect the current corporate interests
 - Western countries are run by politicians who are mostly attorneys and not scientists
 - They have proven to be largely unable to understand scientific facts and findings and are unable to understand the urgency behind many issues.

3

With heavy emphasis on lab testing desperate parents are financing ongoing medical research on ASD that should be funded by medical schools and governments.

The situation has turned moms into scientists and mental and biochemical heavyweights and turned them away from motherhood and playfulness, the very quality the children need to be nurtured and to recover.

4

The 5 A's

- In the German literature it is well established that 6 illnesses have the same underlying causes and respond to similar treatment strategies:
 - Autism
 - Allergies
 - Atopic skin diseases
 - Asthma
 - ADHD
 - Seizure Disorders
- The treatment suggestions outlined in this paper can be applied to a large degree also to these six illnesses.

5

Common physical findings in ASD

(all consistent with expected and reported findings of severe mercury toxicity)

- Blocked “mirror-neurons” in frontal cortex (inability to respond to mom’s feelings, love, gaze, smile)
- Inflammatory Bowel Disease
- Increased size of frontal lobe and white matter
- Cerebellar atrophy (reduced number of Purkinje cells)
- Increased “neuronal packing” in cortex
- Cytoarchitectural changes in subcortical structures
- Micro-and astroglia activation with leaky blood brain barrier
- Altered glutamate receptors
- Hippocampal damage
- Elevation of inflammatory cytokines in brain and CSF: MCP-1, IFN γ
- IgA deficiency and increased IgE
- Lymphopenia
- T-cell abnormalities
- Abnormal NK cell function

6

Common energetic findings in ASD

- Energy body/soul displaced into the surrounding area near the physical body (huge energy field)
- Enhanced energetic perception (child knows what you are doing behind their back)
- Enhanced capability for telepathic communication
- Perceptions and communications cannot be received in, and down-stepped into, the physical body (function of tubulin, which is destroyed by Hg)
- Very responsive to properly used Energy Medicine applications
- Switching and blocked regulation
- Hyperactivity in most meridian systems
- Autonomic dysfunction
- Severe 2nd and 6th Chakra abnormalities
- Because of extraordinary energetic sensitivity the ASD child becomes recipient of unhealed transgenerational family issues (this perpetuates the illness)

7

The single cause of autism

- Autism is a new man made condition – and therefore avoidable in the future
- Occurrence and severity of autism is directly related to toxin exposure in a child with inadequate genes (those that code for detoxification enzymes)
- Autism is not multifactorial: CNS-mercury plays the key single role in causing autism
- 3 main sources of mercury toxicity...

8

Three main sources of mercury toxicity:

1. **Thimerosal** from vaccines, Rh-prevention (Rhogam), other medications

- Autism and ASD is absent in the Amish community where children are not vaccinated. As soon as they do, they also become ill
- Nigeria: the Bill and Melinda Gates foundation
 - Forced vaccinations with the help of GAVI (Global Alliance for Vaccines and immunization) onto African countries
 - Amount of thimerosal, which was known to cause trouble in US children and outlawed in the US in 1999, was doubled in the vaccines for Africa pushed by Gates
 - Since introduction of mass vaccine program in China an estimated 1.5 million children became ill with ASD since 1999. An unknown number of children (in the hundred thousands) in Nigeria alone developed ASD after forced vaccinations. There was no ASD in Nigeria before.
 - Awareness of vaccine-ASD connection causing imprisonment and worse
 - Corporate strategies involving other countries

9

Three main sources of mercury toxicity:

2. **Environmental** (Environmental mercury release, special education rates and autism disorder: an ecological study of Texas. F.Palmer et al., Health and Place, Vol 12, Issue 2, June 2006, pp 203-209)

”on average, for each 1000 lb of environmentally released mercury, there was...a 61% increase in the rate of autism”

3. **Mother** (2/3rds of body burden passed on to child during gestation and breastfeeding)

- Most biochemical, developmental, medical and behavioral findings in autism are secondary to mercury toxicity.

10

Synergistic factors

(factors that increase toxic effects of mercury)

- Testosterone:
 - Recent use of Lupron has successfully improved ASD symptoms (to lower testosterone in children with elevated levels).
 - I use a special preparation of a homeopathic homaccord of testosterone, which lowers testosterone naturally.
 - PC-SPES (several Chinese herbs) has been used successfully to lower testosterone in older male ASD patients.
 - Ground flax seeds (1-2 tbsp/day) in yogurt or cottage cheese are successfully binding hormone metabolites in the gut preventing re-absorption
- Zinc has a well documented synergistic toxic effect with mercury (beware of too much zinc!)
- All other toxic metals
 - Most researched is lead: an LD 1 of lead given to a group of rats (=the dose that is lethal to 1% of the rats in the group) at the same time with an LD 1 of mercury caused the death of all rats (LD 100). In mercury toxicology 1+1=100
- Most environmental toxins (recent papers on PBDEs, phthalates, bisphenol A)

11

Genetic polymorphisms and absent genes

- Glutathione S-transferases (type M1 responsible for detoxifying many environmental toxins).
 - Solution: enhance glutathione-SH production and availability: chlorella in high doses, NDF, alpha lipoic acid 25-50 mg every 6 hours 3 days on, 11 days off, methyl-B12 shots. Consider nasal glutathione drops/spray. Consider TD-glutathione on alternating non-DMPS days
- Methylation and related enzymes (COMT= enzyme responsible for breaking down unneeded neurotransmitters, MTHFR or methylene tetrahydrofolate reductase, MTRR or methionine synthase reductase). Consequence of reduced methylation capacity: reduced DNA methylation means: altered activity and function of proteins, altered neurotransmitter function, reduced synthesis of membrane-phosphatidylcholine
 - Solution: give BioPure Phospholipid Exchange ½ tsp/day, use methylated B 12 (chlorella has highest amount found in nature) and methylated folic acid or folinic acid (there is need for hydroxyl-B12 and folic acid as well), adjust diet frequently using ART testing. Our homeopathic program is handling this issue beautifully (see below)
- Sulfation genes (i.e: transsulfuration pathway depressed in ASD: low homocysteine, cysteine, methionine and glutathione)
 - Solution: use homeopathic sulfur (see below)
- Acetylation genes
 - Solution: use homeopathic program given below
- Enzymes of cytochrome p450 pathway
 - Solution: use homeopathic "Hepar comp" (see below)

12

Damages caused by Hg injury in ASD children

- Enzymes: No researcher ever found any enzyme system in the body that has not been damaged by mercury. We have about 25,000 genes carrying the building plan for all of our enzyme systems. Together with epigenomic mechanisms each gene controls the manufacture of about 1,000 different gene variations.

Some outcomes of mercury induced damage:

- Whatever enzyme or system any particular researcher has ever looked at, there was Hg-caused damage. Much of it is reversible for quite some time
- Damaged blood brain barrier (astrocytes) with secondary toxic insults
- Defective gut barrier (leaky gut) with rapid food allergy development
- Developmental delay
- Changes in "mirror-neurons" of frontal cortex and limbic system
- Lack of clipping of non-serving dendritic connections
- Neurotransmitter dysfunction
- Maladaptation of every system(ie: poor nutritional intake)
- Blocks PPAR (peroxysome proliferators activator receptor): peroxysomes are cell organelles; they are the "liver" of the cell, responsible both for neutralizing toxic substances and for producing the special thing each cell is about: hormones in the hormone glands, bile in the liver cells, enzymes in the pancreas cells, etc. Recently the drug ACTOS has been used in ASD to increase the amount of peroxysomes produced in the cell. It has been overlooked, that chlorophyll (highest in chlorella) also induces the PPAR very effectively without the high cost and side effects of the medical drug.

13

Damages caused by Hg injury in ASD children

(cont.)

- The lack of central intelligent control of the immune system and the damage to aspects of the immune system itself leads to:
 - defective vigilance
 - failure to recognize self vs. other (autoimmune diseases www.MELISA.org)
 - inadequate response to invading microbes
 - failure to recognize microbial molecular mimicry
 - many other aspects of immune incompetence
 - this in turn leads to invasion of the system by opportunistic microbes and inability to respond to vaccine induced microbes appropriately

14

Most common opportunistic infections in ASD:

- Measles virus persistent in the intestinal tract
- Giardia and amoebas
- Roundworm, threadworms and tapeworms
- Herpes viruses
- Strep infections and consequences (chorea minor)
- Borrelia burgdorferi and co-infections (out of 8 recently tested children we found Bb IG-M positive in 7 with the Western Blot test)
- Molds and fungi
- Mycoplasma

Helpful tests: Immunosciences (310- 657 1077)

- Premier Autism Panel (measles, strep, viruses, Hg markers)
- Multi-peptide ELISA test for Borrelia and co-infections
- Mold Panel

15

The relationship between mercury and microbes

- Microbial involvement is compartment specific: those areas contaminated with mercury are most immune compromised (absent immune surveillance in these areas) and become ideal breeding places for invading microbes. Compartmentalized Herpes viruses are known to be responsible for seizure foci in the brain in ASD children
- Trying to eliminate the opportunistic microbes before reaching a reasonable degree of toxin elimination in the involved area is not possible.
- Antibiotic, nutrient and herbal uptake in a toxin contaminated area is only minimal and will ultimately not succeed.
- Most important long term strategy: decontaminate the most crucial areas in the CNS before attempting major antimicrobial strategy

There is no cure of autism without eliminating the different forms of mercury from most body compartments.

16

Is it not enough to eliminate the mercury then?

Mercury is the match that ignited the forest fire (multiple biochemical aberrations). It is not enough to extinguish the match if you want to stop the forest fire – once it is burning. A lot more action on different fronts is needed.

- Elimination of all synergistic toxins
- Recognition and activation of defective enzyme systems
- Identifying and treating the 7 perpetuating factors:
 1. food allergies
 2. systemic family issues and early psychological/emotional trauma
 3. ongoing toxin exposure (mold, carpet floors, etc)
 4. unhealed focal areas or interference fields: umbilical scar, circumcision scar, head trauma from birth, chronic intestinal inflammation, tonsil infection
 5. geopathically disturbed sleeping location and electrosmog
 6. defective dentition and facial development of head/neck/jaw structure
 7. persistent chronic stealth infection

17

Klinghardt Autism Protocol

Five steps:

1. Symptomatic relief (with every non-invasive method currently available)
2. Identify and treat/eliminate all 7 risk factors
3. Decontaminate: identify and decontaminate compartmentalized mercury, environmental, myco- and other toxins
4. Treat: identify and treat opportunistic infections
5. Restore damaged nervous system, immune system and gastrointestinal tract

18

I. Symptomatic Relief

What to eat and what not to eat:

- Best: ART or MSA testing for all foods. Should be done once/month to adjust for rapid changes
- 2nd best: therapeutic 14-day food elimination trial
- 3rd best: Coca pulse test (whenever possible)
- 4th best: lab testing: IgG, ELISA-Act for delayed reactions, food sensitivity panel from Carbon-Based Corporation (needs all 3 to get close to the truth)

19

I. Symptomatic Relief

What to eat and what not to eat:

- Common sense diet: eliminate all grains (especially gluten containing barley, rye, oats, wheat and spelt (b.r.o.w.s), all cow dairy, all soy, all corn, all non-organic food)
- Specific carbohydrate diet (avoid disaccharides – use only monosaccharides) – based on observation that Hg has destroyed ability to make enzymes that digest disaccharides (disaccharidases)
- Give enzymes at the end of each meal (digestive enzymes are ph dependent and work in alkaline environments. The Ph in the stomach is 1.5 before eating and 4.5 at the end of a meal - much more alkaline)
- Use HLC MindLinX probiotic (Pharmax): Lactobacillus crispatus (CLT221) and Lactob.rhamnosus (CLT341) degrade exorphins from casein and gluten (1 cap or 1/4tsp with each meal)
- If still breastfeeding: continue, but have mom take 10 tabl BioPure chlorella 3-4 times per day to clear toxins from milk

20

I. Symptomatic Relief

What to eat and what not to eat:

- Formulas: Non-dairy (Neocate) or predigested (Alimentum, Nutramigen)
- Give the child chlorella (tablets to chew – more is better. Swiss mothers have reported complete resolution of their children’s autism by giving 120 or more tablets chlorella/day. Kids either love it or hate it)
- Use Beta-Glucan based probiotic from BioPure on and off
- Super Baby Foods Cookbook

21

I. Symptomatic Relief

The Biomedical approach:

- Vitamin B6 (Bernard Rimland: “Autism Research Review international” Vol 1, No4, 1987):
 - At least 21 papers show benefits in autism when given in high doses: 300-500 mg/day or 30 mg/kg/day as pyridoxal-HCL. I like to do a 6 week trial. If client has no beneficial response during that time I continue to give closer to normal doses for the entire length of treatment time. Given as P-5-P may need lesser dose
 - Seizure control: 300 mg B6/kg/day (Pietz)

22

I. Symptomatic Relief

The Biomedical approach:

- When using B6 approach, obligatory:
 - Magnesium Citrate : 400 mg /day or at least 25% of mg dose of B6 or at least 10 mg/kg body weight
 - Zinc (I only recommend low dose supplementation because of synergistic effect with mercury). Always use some copper when using zinc long term. Copper is needed to fight infections. Recent copper-phobia based on misunderstanding of hair and element analysis (copper used up by immune system appears displaced in hair and aging red cells)

B-6 overdose is rare but has to be recognized when not using ART testing.

Leads to easily reversible neuropathy recognized by:

- Child shakes hands as if to get circulation back
- difficulty picking up objects such as foods
- difficulty walking because of numbness on bottom of feet

23

I. Symptomatic Relief

The Biomedical approach:

- Vitamin C : 100 mg/kg minimum (ARRI 6/1)
- B-complex: many children respond poorly to the available products. I recommend high doses of pantothenic acid, niacin and B2 only – or nutritional yeast if tolerated

24

I. Symptomatic Relief

The Biomedical approach:

- B 12 and folic acid: there has been great controversy regarding B 12 and folic acid. Recently folinic acid or methylated folic acid (L-5-methyl-tetrahydrofolate) have been recommended over folic acid. Dana Gorman (and us) find folic acid in combination with hydroxy-B12 (5:2 ratio) more commonly helpful when given at the same time sublingually several times/day. It is best to use ART testing to find which form of folic acid is the right form for this particular patient today

- Folic acid: de-methylates toxic substances
- Hydroxy-B12: has been found to remove toxic nitric oxide compounds from brain

Multi-mineral supplement in high doses (M.Gentile)

Dimethylglycine: using 125 mg tablets: start with ½-1 tabl 4 times/day. Increase dose until stinging/regression improves. Give next dose when effect lost. Up to 20 tabl/day in divided doses

25

I. Symptomatic Relief

The Biomedical approach:

- Methyl-B12 (J.Neubrandner)
64.5mcg/kg given subcutaneously once every 3 days (takes often several months before showing positive results) use 25 mcg/ml concentration

Other recommended supplements:

- Calcium citrate 600-1200 mg/day
- Fish oil (Nordic Naturals): 2 tsp/day
- Udo's Oil: 1-2 tsp/day
- Folinic acid (if it tests better than folic only): 800-1600mcg/day
- Vit E <5 years: 200/day >5 years: 400/day
- Vit A (use Biotics emulsion): 5000-7500/day
- Selenium: 200mcg/day

26

I. Symptomatic Relief

The Biomedical approach:

- Low dose Naltrexone (LDN): start with 0.1 mg at bedtime and work up to 4.5 mg if no effect is seen. Immune modulation. Significant symptom reduction in over 50% of ASD children
- Blue light: if hyperactivity is part of the picture, wearing blue glasses or using a blue lightbulb (with the Dinshah method or simply in the light fixture in the child's primary room)
- Read the advice given by Dana Gorman
www.DefeatAutismYesterday.com

27

II. Identify and treat/eliminate the 7 risk factors

1. Food allergies

- I know how difficult it is already to feed a healthy child. Feeding an ill child and having lots of food restrictions can be a nightmare. Stretch and try your best. And: compromise. Don't drive yourself nuts.
- Food allergies and sensitivities change rapidly in the ASD child, especially during Hg detox. We use ART (or MSA) as a fast low cost predictor of the most suitable food at this particular time. The available lab work is cumbersome, unreliable (see papers by Dr Alan Gaby MD) and very expensive. ART has been reliable and extremely helpful and can be learned by any mom or dad.
- I suggest that the family only buys food that is ok for the autistic child and not have any of the forbidden foods in the house. As the child improves so will the food sensitivities. They are not the cause but a symptom of the illness. The details of the Specific Carbohydrate Diet are published in the DAN protocols. I recommend the rotation diet, which was first made public by Sally Rockwell. Metabolic typing and the blood group diet have been helpful tools in some, not all patients.
- Because of the gluteo-morphin and caseo-morphin issue cow dairy and gluten should not be eaten, even if there is no allergy. ART testing is a more reliable predictor: if yogurt or Swiss cheese test ok, they can be eaten without adverse effects (on that day).

28

II. Identify and treat/eliminate the 7 risk factors

2. Systemic family issues and early psychological / emotional trauma

- Unresolved transgenerational trauma predisposes to childhood diseases including autism. Some insights are communicated in my paper on the 5 levels of healing (www.neuraltherapy.com). Often therapy and biomedical intervention does not progress until a family healing constellation has been done by an experienced therapist. Unresolved trauma in the child's ancestry creates a disturbance in the field which will filter down into the child's psyche, nervous system and metabolic functioning. It is never too late to heal wounds from the past. The constellation work is unique: the therapy can be done for the child by any living family member

29

II. Identify and treat/eliminate the 7 risk factors

3. Ongoing toxin exposure (mold, carpet floors, plastics from bottled drinking water, flouride, further vaccinations, toxic bedding, etc)

- Every parent of an autistic child should be asked to organize an "indoor air quality inspection" by an expert in the field. Often we find significant mold levels in homes, insufficient ventilation, polluted crawling spaces that leak toxic gases into the indoor environment, outgassing of volatile organic compounds (VOCs) from carpet floors or toxic building materials and many other problems that have synergistic effects with mercury in the brain. We also saw children becoming ill after the neighborhood was sprayed by government licensed pest control efforts or after the toddler/childcare facility was re-carpeted or started using TV dinners for the children which were microwaved in their respective plastic containers.
Use Carbon Based Corp urine test for solvent/plastic metabolites.

30

II. Identify and treat/eliminate the 7 risk factors

4. Unhealed focal areas or interference fields

- Umbilical scar, circumcision scar, head trauma from birth, chronic intestinal inflammation, tonsil infection and other scars. Scars and traumatized body parts create abnormal input into the ANS with resultant adverse multi-system effects
- Chronically infected **tonsils** are often a major contributing problem in brain inflammation/autism (Review paper on my web site www.neuraltherapy.com)
- Degenerated tonsils often house multiple bacterial and viral colonies and produce potent brain neurotoxins
- Be prepared that currently ENT doctors often do not believe that tonsil infections are problematic - and resist performing a tonsilectomy
- Chronic intestinal infections and infestations create a gut-interference field which has to be addressed energetically, biologically and biochemically

31

II. Identify and treat/eliminate the 7 risk factors

4. Unhealed focal areas or interference fields

Diagnosis:

- Immunosciences Autism Panel tests for anti-strep antibodies
- We also use the chair-side dental test for thioethers developed by Boyd Haley (www.ALTCorp.org) on the tonsils. It will often show high levels of toxicity.

Treatment:

- Trial with Sanum remedies: Pleo SanPseu, San Strep and Pleo Not 5 drops 3 times daily for 6 weeks followed by Pleo Sancom drops twice daily for 1 year – or direct injection with neural therapy technique into the tonsils
- Use Tonsilla comp from Heel 1 oral vial once weekly for 1-2 years (multiple other benefits)
 - regenerative cryotherapy (Dr. Sergej Dorochov, www.kryopraxis.de)
 - conventional tonsilectomy

32

Tonsilla compositum

<div style="background-color: #cccccc; padding: 5px; margin-bottom: 5px;">suis organ</div> <div style="background-color: #007bff; color: white; padding: 5px; margin-bottom: 5px;">hormone</div> <div style="background-color: #ff00ff; color: white; padding: 5px;">nosode</div>	<ul style="list-style-type: none"> - Acidicum ascorbium D6 - Glandula lymphatica suis D8 - Tonsilla suis D28 - Medulla ossis suis D10 - Funiculus umbicalis suis D10 - Splen suis d10 - Hypothalamus suis D10 - Hepar suis D10 - Embryo suis D13 - Cortex glandulae suprarenalis suis D13 	<ul style="list-style-type: none"> - Pulsatilla D6 , Conium D4 - Galium Aparine D6, Aesculus D6 - Echinacea Angustifolia D4 - Tartarius stibatus D6 - Dulcamara D4, Coccus Cacti D6 - Gentiana Lutea D6 - Geranium robertanum D6 	<div style="background-color: #ccccff; padding: 5px; margin-bottom: 5px;">plant</div> <div style="background-color: #ff8c00; padding: 5px;">minera</div>
	<ul style="list-style-type: none"> - Cortisonum aceticum D13(Catalyst) - Levothyroxinum D13 	<ul style="list-style-type: none"> - Ferrum Phos phoricum d10 - Calcium Phosphoricum d10 - Merc. Sol Hahn. D13 - Sulfur D8 - Baryum Carbonicum D28 - Acidicum Sarcolacticum D6 	
	<ul style="list-style-type: none"> - Pyrogenium nosode D 198 - Psoriasis nosode D28 		

33

II. Identify and treat/eliminate the 7 risk factors

5. Geopathically disturbed sleeping location and electrosmog

- ASD children are electro-sensitive and cannot tolerate abnormal electric fields from cordless phones, faulty wiring in home, head end of bed too close to electric outlet or wiring in wall, wireless internet, close-by cell phone tower/transmitter or radio tower

Diagnosis:

- best: exam by Building Biology trained expert (Robert Steller)
- inspection by local electrician
- ART testing

Treatment:

- demand switch or disconnect fuses for every outlet in child's bedroom walls
- buy corded phones for home or disconnect cordless phone at bedtime
- no wireless internet
- inspect neighborhood for cellphone microwave emitters
- move house if needed

34

II. Identify and treat/eliminate the 7 risk factors

6. Defective dentition (occlusion) and facial development of jaw structure

- Evaluation and tx by cranial osteopath (D.O.)
- Cranio-sacral therapy (be aware of large quality differences between practitioners)
- See experienced older orthodontic biological dentist (Dr. Dino Paulos, Victoria, Dr. Ara Elmajian, Vancouver, Dr. F.Robeson, Tacoma WA)
- Read book: “Dental Distress Syndrome” by Al Fonder

35

II. Identify and treat/eliminate the 7 risk factors

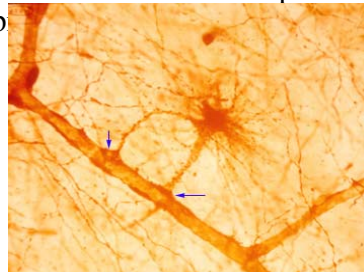
7. Biochemical and nutritional deficiencies

- This is referred to today as the “Biomedical Approach” and has been the focus of the teaching of DAN, DAY and most other organizations
- Most rewarding is the diagnosis and tx of mineral deficiencies (ART, MSA, red cell minerals, hair analysis) and fatty acid disorders (red cell membrane fatty acids/Patricia Kane, PhD)
- Mercury affects every aspect of biochemistry. Without addressing the Hg toxicity at the deepest level, no permanent progress is made with the biomedical approach

36

III. The ethyl mercury elimination protocol

- Once ethyl mercury is introduced (as thimerosal) into the body via injection, it is picked up by unmyelinated nerves and travels inside the axons of the nerves in less than 24 hours to the spinal chord
- In another 24 hours it reaches the brain, where it is initially taken up by the astrocytes. They become ill and start failing in one of their most important jobs: to create the blood b

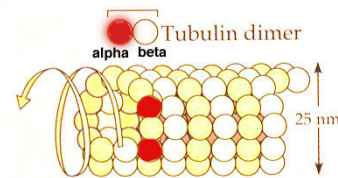


<http://missinglink.ucsf.edu>

37

III. The ethyl mercury elimination protocol

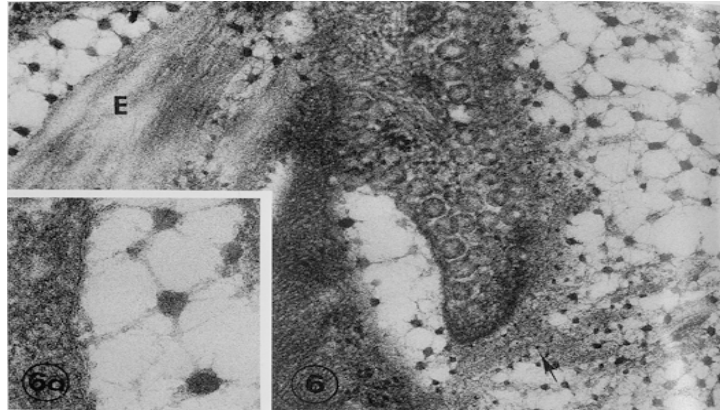
- Later the Hg is taken up by all protein molecules inside the brain and brain-cells: GAGs in matrix, receptors on cell walls, enzymes, structural molecules, GTP, the enzyme which creates tubulin (see article by Joachim Mutter), enzymes of the citric acid cycle inside the mitochondria, etc.



www.lbl.gov 38

III. The ethyl mercury elimination protocol

- The main volume of mercury is trapped in the connective tissue of the muscles, bones, ligaments outside the CNS.



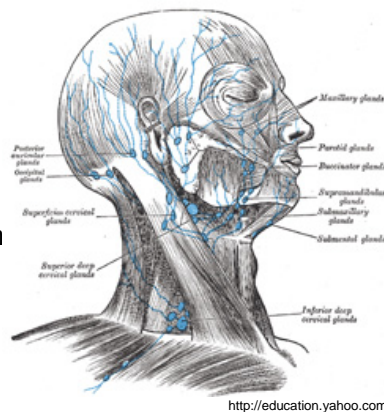
Magnified 100,000 times

Magnified 50,000 times

39

III. The ethyl mercury elimination protocol

- It is also trapped in the lymphatic tissue and adipose tissue
- Overall, only a small amount reaches the brain
This amount is responsible for most symptoms



<http://education.yahoo.com>

40

III. The ethyl mercury elimination protocol

Principles of detox:

1. *The order*

- Clear the emunctories (excretory organs) first of mercury and other toxins (Heel remedies are ideal)
- Remove the bulk of Hg first which is not bound in the CNS (iv DMPS and Vit C, DMSA orally, DTPA, chlorella are ideal)
- Remove the brain-Hg last (transdermal DMPS, oral cilantro, microcurrent)

41

III. The ethyl mercury elimination protocol

Principles of detox:

2. *The chemistry*

- Hg is bound in different molecular arrangements:
 - metallic Hg (only in fatty tissue)
 - inorganic salts (connective tissue)
 - organic molecules (methyl, ethyl and phenyl mercury)
- There are virtually dozens or hundreds of differences how Hg is bound in the tissues, inside cell structures and organelles
- No single detox agent can address all forms of Hg in the body.
- A good program uses sequentially different agents.
- Essentials:
 - A protein rich diet corrected for blood type (D'Adamo), metabolic type (Wolcott) and food sensitivities.
 - Mineral supplementation to compete with toxic metals at binding site (liquid minerals from Melanie Gentile PhD).
 - Correct for all known or suspected vitamin/nutrient deficiencies

42

III. The ethyl mercury elimination protocol

Principles of detox:

3. *The program:*

- Give *BioPure chlorella* to detoxify the intestinal tract (2 weeks) – 10-60 tbl 3 times/day. After 2 weeks reduce dose to 8 tbl 3 times/day. Include *NDF* 10 drops twice a day in water for 2 months or the entire length of program
- Add *matrix electrolyte* to all drinks and to food (2 tbsp/day)
- From day 1: give 1 tsp *BioPure Phospholipid Exchange* (Alpha-lipoic acid, Magnesium, EDTA and Phospholipids)
- After 4 weeks add: 2-10 drops *cilantro (BioPure)* in hot water at bedtime. Rub 5 drops into wrists and 5 drops into ankles twice daily (front and back).

43

III. The ethyl mercury elimination protocol

Principles of detox:

3. *The program:* (cont.)

- Ideal: use “Toxaway” foot bath from BioPure 3 times per week to activate the detox related ANS functions (often dramatic initial results)
- After another 2 months start TD DMPS: 1.5 mg/kg body weight every other day (rub into most soft skin areas: front of neck, wrists and ankles are best, in boys also scrotum).
- Always pause any of the detox agents when patient aggravated/worse until crisis is over. Focus on homeopathics during crisis.
- After 6 months, consider TD-DMSA. TD EDTA has not shown any results in my experience
- Consider glutathione inhalation or nasal spray (Key pharmacy, Kent, WA). Oral glutathione has only a local effect in the gut and a placebo effect

44

IV. Treating infections and infestations

Primary advice: first treat, then try to confirm diagnosis.
This is especially true for Lyme Borreliosis.

- Worms:
 - Vermox 100 mg twice daily for 3 days, repeat after 21 day pause
 - Often needs follow up treatments. Biltricide is most effective at high doses (30 mg/kg body weight 3 times per day on day 1, 20 mg/kg day 2 and 10 mg/kg day 3, repeat after 21 day pause).
- Giardia/amoebas:
 - Tinidazol. 75 kg Adult dose: 500 mg twice daily for 10 days.
 - Adjust dose according to body weight but stay on the high side.
 - Follow with BioPure freeze dried garlic 1-2 caps after each meal 3 times/day for 2-3 years or for good

45

IV. Treating infections and infestations

- Bacterial/fungal/mycoplasma:
 - BioPure Samento: start with 2 drops in glass water once daily
 - If no worsening (=Herxheimer reaction) increase slowly to 2 drops per year of age twice daily to a maximum of 1 dropper full twice daily
 - Treats most known extracellular microbes
- Intracellular microbes:
 - BioPure Noni: start with full dose: 2 drops per year of age twice daily in glass water.
 - Reduce dose during Herxheimer reactions
 - Lab testing for Lyme and co-infections can be done successfully after 8 weeks of continuous treatment (IgeneX lab in Palo Alto, Cal)



46

IV. Treating Infections

Mold

- Many homes in the US have elevated levels of mold (aspergillus, cladosporium, stachybotrys) caused by poor building plan and materials
- Have indoor air quality inspection
- Use propolis room vaporizer (kills most known indoor molds, bacteria and viruses)
- Use matrix microbes in spray bottle and spray entire home twice weekly (competing healthy microbes which create a health inducing milieu)
- Fluconazole and Nystatin orally

47

IV. Treating infections and infestations

- Viral infections (HSV 1, HHV 6, EBV, VZ, CMV) respond excellent to management with Heel homeopathics
- Measles:
 - 400,000 units Vit A palmitate in 3 divided doses for 2 consecutive days only. Repeat after 6 months, then once yearly
 - Also works on other viruses (HPV, etc)
 - Guidelines published in “Biomedical assessment options for children with Autism and related problems” by J Pangborn and S Baker, Autism research Institute, 4182 Adams Ave, San Diego, CA 92116, Oct 2002 edition, pp 216-220

48

V. Healing the damage

1. Neurodevelopmental therapies

Best time: earlier is better - but child may not be ready to participate.

Has to be included no later than 9 months into program

- Ed Snap: creating an intrauterine environment to regress the neurons to a stage where everything was and still is possible. Dramatic results
- Color therapy: College of Syntonic Optometry or Dinshah method
- Sound therapy: Tomatis therapy or "bastardized" versions of it: the listening program
- EEG biofeedback
- Newer techniques involving touch, movement and sensory stimulation of all kinds

2. Homeopathy (see above)

3. Live cell therapy (available only in Canada, offshore and in Europe)

4. Stem cell therapy (available in Mexico, soon also in Nevada)

5. Treat mom and dad for PTSD

49

The synergistic use of homeopathic medicine in the treatment of ASD

- ASD cannot be healed with the biomedical approach (=supplements and drugs) alone. It has failed. My teacher in homeopathy, the late Gerhard Koehler MD, PhD made a simple observation.
- There are 3 types of healing agents and methods:
 - Suppression therapies: anti-inflammatories, anti-biotics, anti-fungals, anti-tumor agents, etc
 - Substitution therapies: insulin, thyroid hormone, minerals, etc
 - Regulation therapies: homeopathy, herbs, neural therapy, acupuncture
- Illnesses can only be lastingly healed, if the self-regulation of the system is fully restored and fully functional. This cannot be achieved with suppression methods or substitution methods. It can only be achieved with regulation medicine. The leading treatment is, and always was, homeopathy.

50

The synergistic use of homeopathic medicine in the treatment of ASD

Homeopathy Basics:

There are 2 fundamentally different approaches used in homeopathy today.

1. Classical Homeopathy

- Uses single remedies
- Remedy is determined by repertorizing
- Advantage: works on 1st, 2nd and 3rd level. Most elegant healing method, if it succeeds (today rather an exception)
- Disadvantage: takes many years of training and experience. Most advanced and alive “culture” of classical homeopathy is found today in India and Germany

51

The synergistic use of homeopathic medicine in the treatment of ASD

Homeopathy Basics:

2. Reckewegs Homotoxicology

- Uses multiple synergistic remedies - which are focused around a particular medical theme - at the same time (combination formulas)
- Its use can be based on Western diagnostic systems
- Very effective
- Requires little training to use correctly
- Very safe to use
- Most advanced development: the formulations by Dr Reckeweg (Heel/BHI)
- Disadvantage:
 - Almost no effect on higher levels of consciousness
 - Not respected by classical homeopaths

52

The synergistic use of homeopathic medicine in the treatment of ASD

3 carriers of homeopathic healing energy:

1. **Liquids** (water alone, or water plus alcohol or saline or minerals)
 - Advantage: holds the energy very strongly for up to hundreds of years
 - Disadvantage:
 - When kept in plastic bottles, becomes contaminated with Phthalates, Bisphenol A and Dioxin. More expensive to mail.
 - When alcohol is used, may interfere with religious beliefs (people that have succeeded in AA) or belief that it may cause growth of intestinal yeast. Some folks have a true alcohol allergy.
 - When no alcohol is used, bacterial or yeast growth may occur over time depending on source of material. No difference in the different solutions regarding how long information is stored.
 - Heel offers multiple dose bottles in water/alcohol base (35Vol % ethyl alcohol) and oral sips (“single-dose-vials”) which are water or saline based without alcohol. The single dose vials are approved in Germany and most civilized countries for injection in humans and animals. In the US injection of these remedies would constitute an “off-label” use.

53

The synergistic use of homeopathic medicine in the treatment of ASD

3 carriers of homeopathic healing energy:

2. **Sugar pellets** (lactose)
 - Overwhelming disadvantages:
 - Hold energy of original remedy in the water coat surrounding all sugars in temperate climates, not in the actual sugar. Energy is weaker than the energy in liquid-based remedies
 - All homeopathics available in US health food stores (Boiron, Sanum, BHI, Heel) use lactose in their homeopathic tablets or pellets. Lactose is a di-saccharide. Autistic children commonly have a lactose intolerance or allergy (defect in di-saccharidases). Lactose based homeopathic preparations are not suitable for use in autism. The DHU remedies (Deutsche Homeopatische Union) - which to my knowledge are not available in the US - are the only “dry” classical homeopathic pellets that use a non-allergenic easy to digest mono-saccharide

54

The synergistic use of homeopathic medicine in the treatment of ASD

3 carriers of homeopathic healing energy:

3. Energy medicine applications:

- Audio/video tape (magnetized metals)
- Superimposed on pulsed microcurrent (KMT technology)
- Homeopathic “information” superimposed on laser beam, sound, magnetic field or other EM-carrier
- Digital information stored on computer

55

The use of Heel remedies in ASD

- Only the oral sips are universally acceptable and ideal for all ASD patients (see previous)
- Some important remedies are only available as alcoholic tincture or lactose based tablets (advantages have to be weighed carefully)
- Use 20 minutes away from all food or drinks. If different homeopathic remedies are given orally at the same time, separate by 30 seconds
- All available remedies have their appropriate place and time in the management of the typical ASD patient
- I will give “recipes” from my office which have often been very helpful and are filling an important, but often overlooked, therapeutic gap

56

Why use the Heel remedies?

- Abundant and intelligent literature/learning support
- Easy to understand, use and integrate into an existing ASD program
- Regulation medicine is absolutely necessary to achieve long term results. Missing in most current DAN protocols
- Heavy metal detox in the brain can only be achieved by including regulation medicine into the program
- Does not need expensive long training to achieve excellent results (I have taught the use of the remedies to hundreds of practitioners in a few hours, who then went on and became experts in applying the remedies with excellent results in their programs)
- Inexpensive
- Safe and with no serious side effects
- Even the consistent use of the “wrong” remedies leads to improved ability of the system to self-regulate (vast German body of research)

57

How to target different tissues or body compartment?

Homeopathics act most strongly on the germinal layer or in the system where they are introduced

- Skin and brain are derived from ectoderm, the same embryonic layer. To reach the brain, the most profound effect is achieved by injecting the remedy into the surface 2 mm layer of the skin or using a transdermal cream (such as TD-DMPS). Sniffing (or dropping) the remedy up the nose (olfactory nerve and parasympathetic nerves connected to brain) is also effective. Example: Thalamus comp
- If the Endoderm is to be reached (gut and appendages) it is best to swallow the medicine Example: Nux vomica Homaccord
- If the mucous membranes are to be reached it is best to introduce the remedy simply into the oral mucosa (“sublingual application”) Example: Mucosa comp
- If the lymph nodes of the intestinal tract are targeted, it is best to inject the remedy into the tonsils which govern the GALT (gut associated lymphatic tissue) Example: Lymphomyosot
- If the Lymph nodes of the mediastinum are targeted (ie in asthma), the first “respiratory” lymph node group should be injected: the adenoids,

Every application outside this system is less effective, but often the next best choice. The proper applications are taught in the courses of the American Academy of Neural Therapy. Most US practitioners use homeopathics only orally with some results.

58

Autistic Spectrum Disorders: Basic Homeopathic Support Program

General remarks:

- Since most clinical tips here are recommending the use of the “single dose vials” and this paper is intended for both the European community and the US health care providers, the following instructions are generally to be followed. Notice, that the doses I recommend in ASD are much lower than the doses suggested for use in the general population (decreased ability to process and excrete mobilized toxins). They might be increased to the doses recommended in other writings as the patient improves.

59

Practitioners outside the US:

- Inject 1 amp once weekly s.c (27 g/1/2”needle)
- Or follow specific neural therapy recommendations for-
 - intra-cutaneous use when treating brain and skin
 - subcutaneous use when addressing matrix of ground system/extracellular space
 - special injection techniques into acupuncture points, ganglia and glands when targeting the ANS or hormone system

60

US Practitioners:

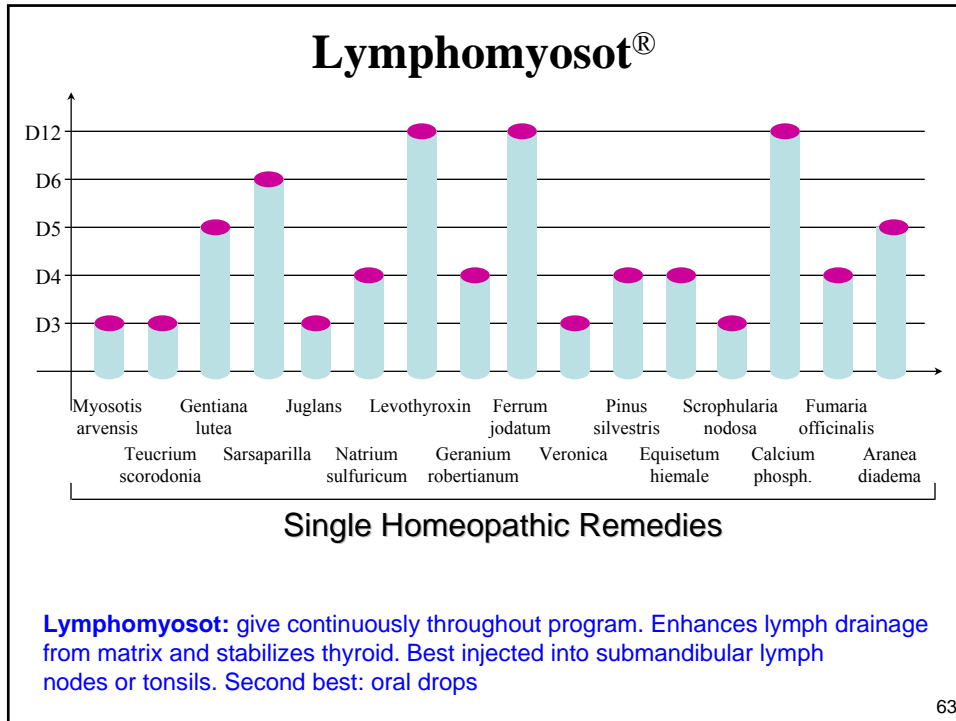
Most Heel oral sips contain 1.1 ml of remedy

- Draw up the content of 2 vials with 21 g 1” needle into a 3 ml syringe (best: glass syringe)
- squirt into small dropper bottle. Use 10 drops once daily, 5 days on, 2 days off (give entire left-over amount from dropper bottle on day 5).
- If the bottle appears empty before day 5, fill up dropper bottle with filtered water, tap 50 times and keep using as before till day 5 (the residues on the glass-wall are enough to create an LM potency of the medicine which enhances the effect in an often almost magical way).
- Keep the remedies initially in separate dropper bottles to be able to experiment with dosages/frequency of application (exactly as you already experiment with your vitamins and medications).
- Later: remedies which are taken in the same pattern can be mixed together and a bottle can be prepared with a 1-week supply. If you observe that a remedy seems to have a positive effect but stops to work after less then 24 hours, consider giving 10 drops every 12 hours (or more often)

61

***Step #1: “only fools rush in”(Elvis Presley):
organize lymphatic and organ drainage before
triggering a dumping of mercury and other
toxins from their hiding places***

62

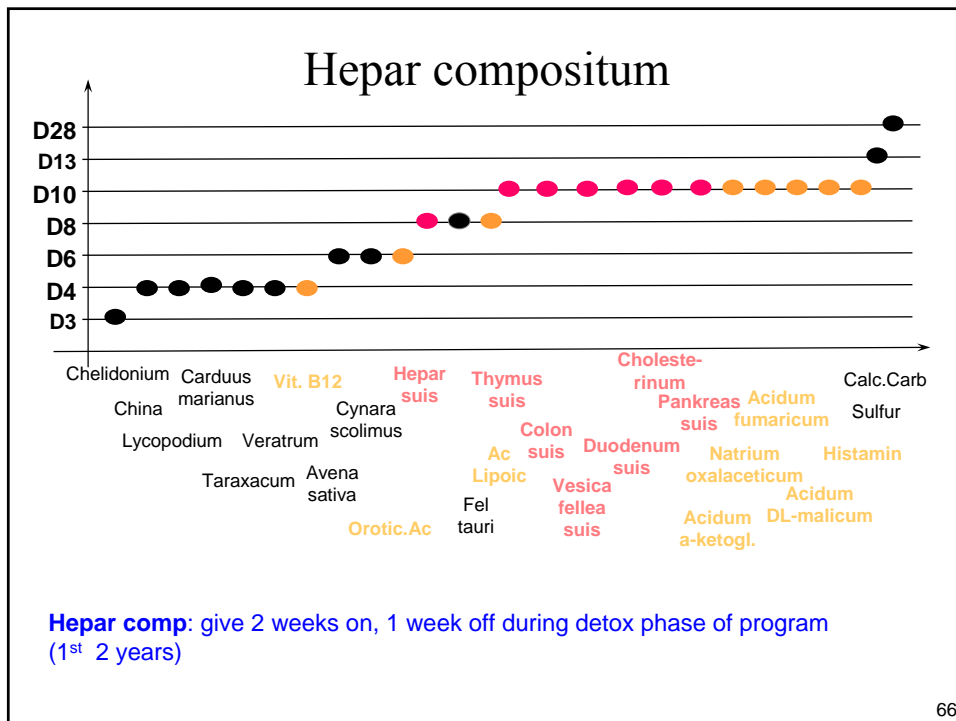
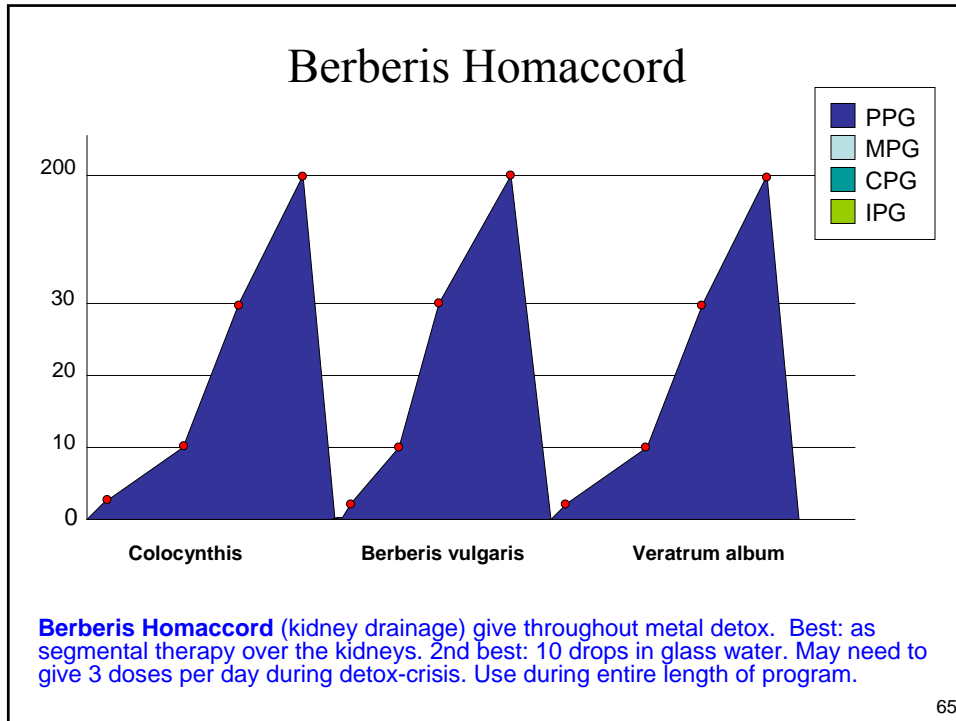


HISTAMIN

<u>Ingredients</u>	<u>Characteristic Symptoms</u>
Oral Vials	
Histaminum 12x, 30x, 200x	Support of detoxification; eczema; allergies
Tablets	
Histaminum hydrochloricum 12x, 30x, 200x	Support of detoxification; eczema; allergies

Histamin: give 5 drops before each meal – prevents food sensitivities very effectively. Try during stinging or regression reactions – decreases brain inflammation often rapidly. Try early on for every crisis. Very effective!

64



Psorinoheel

Ingredients

Sulphur 6X
 Thuja occidentalis 6X
 Vaccinotoxinum 8x
 Bufo rana 10X
 Psorinum 10X
 Medorrhinum 12X
 Natrum muriaticum 12X
 Syphilinum 12X
 Oleander 4X
 Cicuta virosa 5X
 Bacillinum 12X

Characterisitics

Itching, burning skin, worse from scratching
 Warts, carbuncles, brown spots on hands and arm
 Chronic eczema
 Itching and burning skin, pain runs up arm
 Intolerable itching, seborrhea
 Intense and incessant itching, worse at night
 Greasy skin, eruptions in blends of limbs, alopecia
 Reddish-brown eruption with disagreeable odor
 Very sensitive skin with bleeding, oozing eruptions
 Eczema without itching, chronic impetigo
 Ringworm, eczema of eyelids

Psorinoheel: contains 3 miasmatic remedies (inherited weaknesses) except TB. Also contains thuja, an important vaccine antidote
 Give 10 drops twice/week for entire duration of treatment. Exception: use oral drops in alcohol if possible, not single use sips (only the "alcoholic drops" have syphilinum, which is most important).

67

Step# 2: Start metal detox program (after 2 months). Use TD DMPS, cilantro, fish oil, chlorella and other agents along with the following homeopathics...

68

Schwef-Heel

Ingredients

Sulphur 4X, 6X, 12X, 30X, 200X

Characteristics

Skin dry, scaly, unhealthy; great itching and burning, worse from scratching and washing; pruritus from warmth; hot, sweaty hands

Schwef Heel: mobilizes mercury and all other toxins from their protein binding sites. Expect powerful increase in detox symptoms and positive long term effects. Start with 1 drop/day. Increase every 3 days till on 10 drops/once per day. Do not use during detox or Herxheimer reactions (not on days when patient clearly worse, which will happen!)

69

Thuja forte

Ingredients

Thuja occidentalis
4X, 12X, 30X, 200X, 1000X

Characteristics

warts; polyps; carbuncles; herpetic eruptions
sensitive to touch

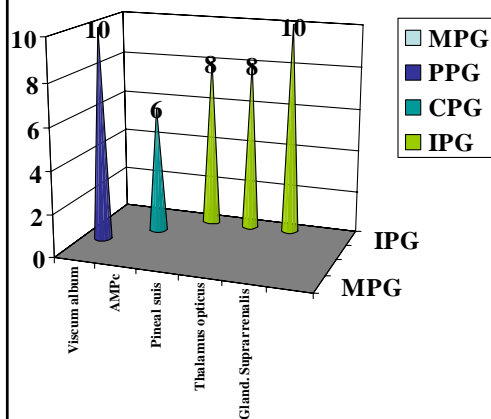
Thuja forte: universal vaccine antidote. 5 drops every other day for 3 months. Eliminates toxic vaccine residues and activates blocked detox enzymes

70

Step # 3: help the cells to wake up and regain their intelligence (and their ability to communicate and clear themselves of toxins)
 Wait 8 weeks (into program) before starting.

71

Thalamus compositum



Thalamus Comp: contains healthy organ extracts of all major glands in brain and cAMP, which is needed for communicating incoming messages to the interior of each body cell. cAMP and cell wall communication is disturbed in all ASD patients. One amp/week for 3 months. Best: 3 drops into each nostril twice daily: 5 days on, 2 days off.

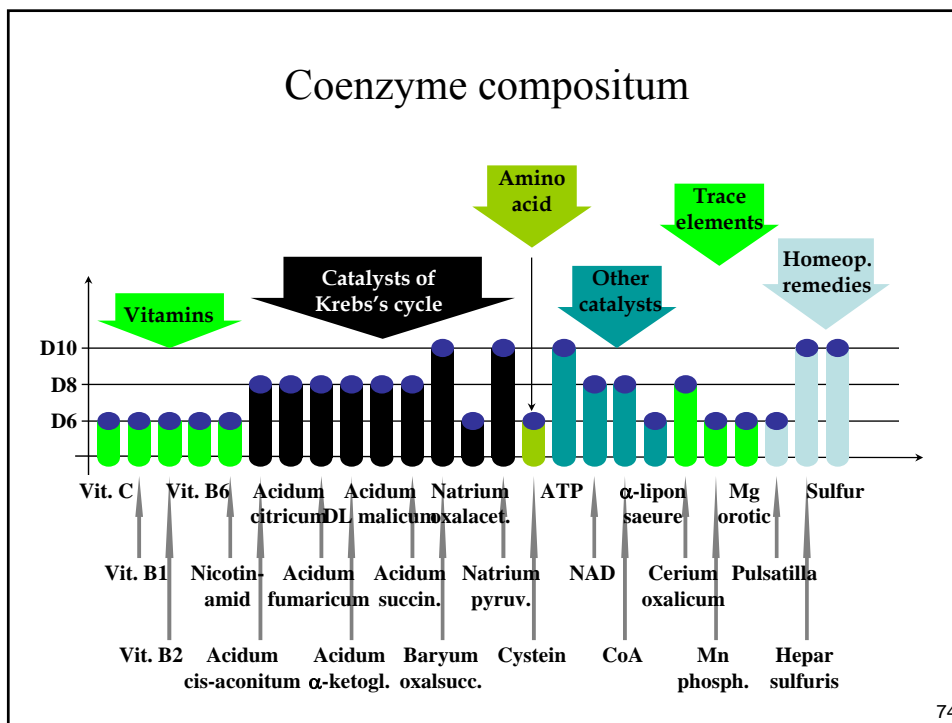
72

Coenzyme compositum

- Contains catalysts/enzymes of the citric acid cycle (CAC) in the mitochondria. The CAC produces ATP – the gasoline with which most cells drive their particular activity (ie: the peroxisomes inside each cell are responsible for most detoxification activities. For this they have a high need for ATP). Most toxins block individual steps of the CAC. Once the toxin is removed, the blockage often stays behind! Coenzyme comp often re-ignites the ATP production. Multiple body-systems start to function better soon after introduction of this remedy. Twice/week for 1st month, then once/week for entire treatment time. Change mode of application: im, s.c, i.c., intra-nasal, oral

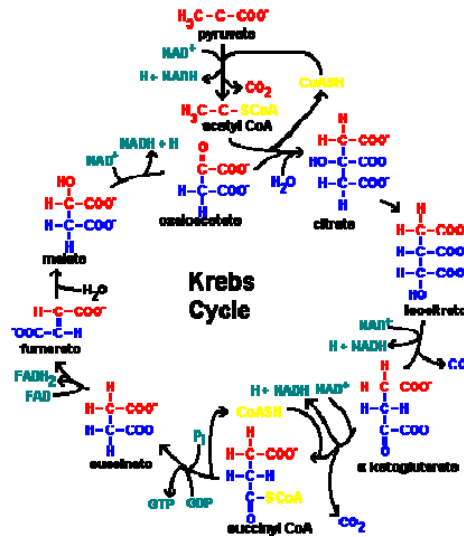
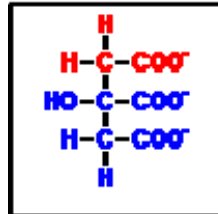
73

Coenzyme compositum



74

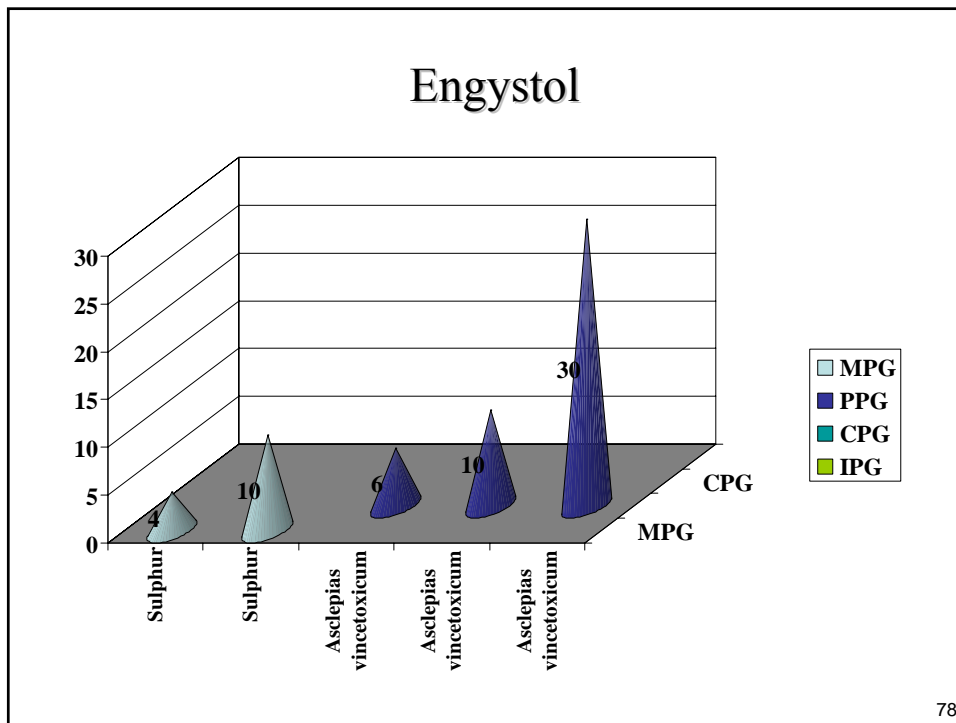
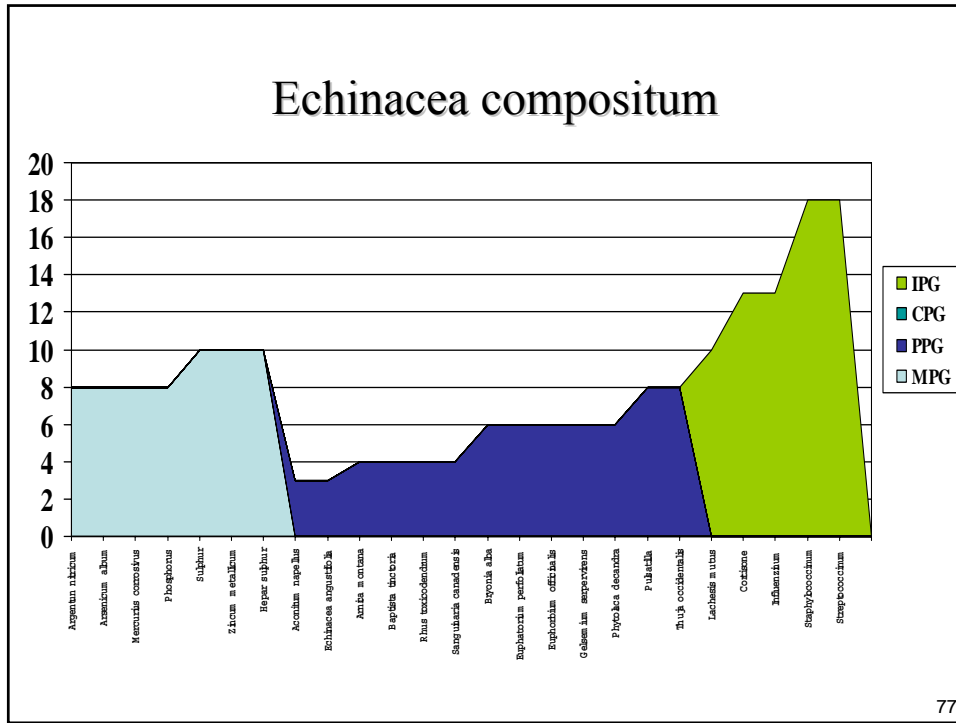
The Krebs/Citric Acid Cycle



75

- *Step #4: clearing infections and infestations: use medical suggestions earlier in this paper.*
- Add these remedies:
 - **Echinacea comp and Engystol:** anti-viral defense system, also against staph and strep: give together for 6 weeks early in the parasite/infection control program and during viral infections (flu) in later stages of treatment. Best: 3 drops twice daily intranasally

76



- **Step #5: Brain and System Repair:** start after being on detox program at least for 4 months

79

Tonsilla compositum

- Contains the homeopathic equivalent of stem cells and growth factors, adrenal and other healthy organ extracts and their RNA)
- One amp/week. I-2 years.

80

Tonsilla compositum

<div style="background-color: #cccccc; padding: 5px; margin-bottom: 5px;">suis organ</div> <div style="background-color: #007bff; padding: 5px; margin-bottom: 5px;">hormone</div> <div style="background-color: #ff00ff; padding: 5px;">nosode</div>	<ul style="list-style-type: none"> - Acidicum ascorbium D6 - Glandula lymphatica suis D8 - Tonsilla suis D28 - Medulla ossis suis D10 - Funiculus umbilicalis suis D10 - Splen suis d10 - Hypothalamus suis D10 - Hepar suis D10 - Embryo suis D13 - Cortex glandulae suprarenalis suis D13 - Cortisonum aceticum D13(Catalyst) - Levothyroxinum D13 - Pyrogenium nosode D 198 - Psoriasis nosode D28 	<div style="background-color: #cccccc; padding: 5px; margin-bottom: 5px;">Pulsatilla D6 , Conium D4</div> <div style="background-color: #cccccc; padding: 5px; margin-bottom: 5px;">Galium Aparine D6, Aesculus D6</div> <div style="background-color: #cccccc; padding: 5px; margin-bottom: 5px;">Echinacea Angustifolia D4</div> <div style="background-color: #cccccc; padding: 5px; margin-bottom: 5px;">Tartarius stibatus D6</div> <div style="background-color: #cccccc; padding: 5px; margin-bottom: 5px;">Dulcamara D4,Coccus Cacti D6</div> <div style="background-color: #cccccc; padding: 5px; margin-bottom: 5px;">Gentiana Lutea D6</div> <div style="background-color: #cccccc; padding: 5px; margin-bottom: 5px;">Geranium robertanium D6</div> <div style="background-color: #cccccc; padding: 5px; margin-bottom: 5px;">Ferrum Phos phoricum d10</div> <div style="background-color: #cccccc; padding: 5px; margin-bottom: 5px;">Calcium Phosphoricum d10</div> <div style="background-color: #cccccc; padding: 5px; margin-bottom: 5px;">Merc. Sol Hahn. D13</div> <div style="background-color: #cccccc; padding: 5px; margin-bottom: 5px;">Sulfur D8</div> <div style="background-color: #cccccc; padding: 5px; margin-bottom: 5px;">Baryum Carbonicum D28</div> <div style="background-color: #cccccc; padding: 5px;">Acidicum Sarcolacticum D6</div>	<div style="background-color: #cccccc; padding: 5px; margin-bottom: 5px;">plant</div> <div style="background-color: #ff8c00; padding: 5px;">minera</div>
---	---	--	--

81

Placenta Comp.

<u>Ingredients</u>	<u>Characteristics</u>
Aesculus hippocastanum 4X	Chilliness up and down back
Sarcolacticum acidum 4X	Tired feeling with muscular prostration, sore feeling all over
Secale cornutum 4X	Debility, anxiety, emaciation
Cuprum Sulphuricum 6X	Cramp of plain and striped musculature
Melilotus 6X	Numb, aching knees, skin and extremities cold
Placenta suis 6X	Peripheral circulatory disorders
Solanum nigrum 6X	Violent restlessness, alternation of coldness and heat
Strophanthus hispidus 6X	Generalized edema, swollen extremities
Embryo totalis suis 8X	Revitalization
Natrum pyruvicum 8X	Promotes detoxification
Vena suis 8X	Varicose veins, crural ulcers
Arteria suis 10X	Intermittent claudication
Funiculus umbilicalis suis 10X	Impairment of connective tissue
Hypophysis suis 10X	Disorders of connective tissue function
Tabacum 10X	Legs and hands icy cold, limbs tremble
Vipera berus 10X	Vericose veins, severe cramps in lower extremities
Baryta carbonica 13X	Cold, clammy feet, icy coldness of body
Plumbum iodatum 18X	Muscular atrophy

Placenta Comp: more growth factors from different sources.
One amp/week 1-2 years

82

Other proven helpful remedies, which should be used only as needed:

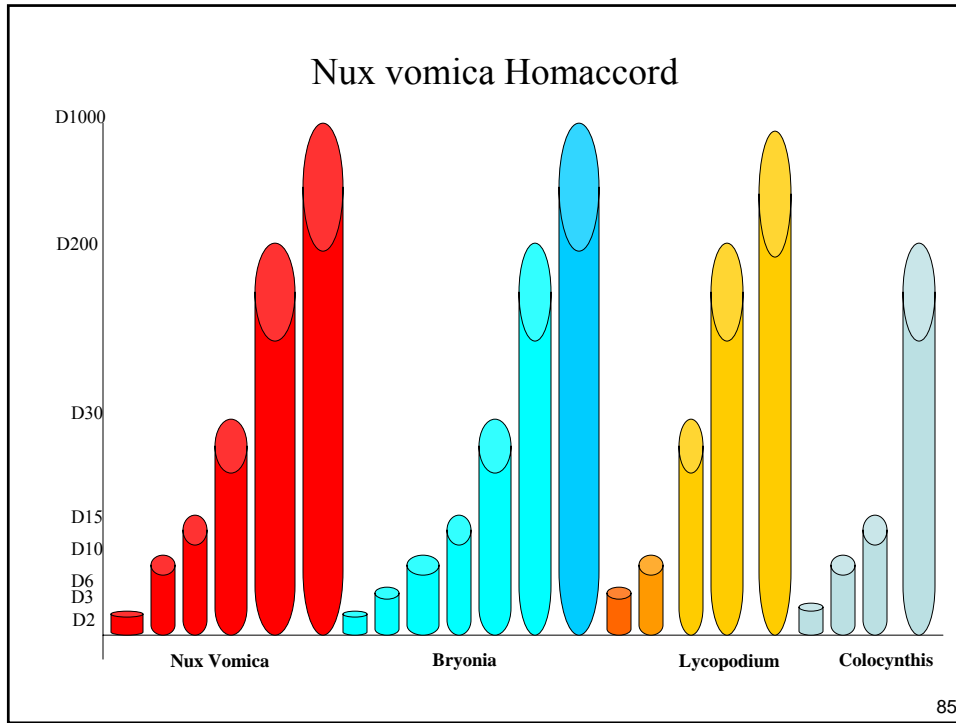
- **Cerebrum Comp:** should be tried once for 2 weeks. Continue only, if good effect
- **Nux vomica:** try for abdominal distress
- **Valerianaheel:** for ASD insomniacs and against brain herpes viruses
- **Apis Homaccord:** to treat Borrelia infection and brain inflammation
- **Belladonna Homaccord:** to reduce brain inflammation (not suitable as long term remedy)

83

Cerebrum Comp.

<u>Ingredients</u>	<u>Characteristics</u>
Aesculus hippocastanum	Head dullness and confusion
Cinchona officinalis	Intense throbbing of head
Cocculus indicus	Profound sadness
Conium maculatum	Disinterested; weak memory
Gelsemium sempervirens	Dullness of mind
Ruta graveolens	Eye strain followed by headache
Aconitum napellus	Great fear; anxiety
Anacardium orientale	Impaired memory, absent-mindedness
Hyoscyamus niger	Deep stupor; confusion
Kali phosphoricum	Confusion, irritability
Thuja occidentalis	Memory deficiency
Cerebrum suis	Mental exhaustion, brain weakness
Ignatia amara	Sad, uncommunicative
Kali bichromicum	Vertigo; frontal headache
Manganum phosphoricum	Weak memory, anemia
Ambra grisea	Tearing pain in upper part of brain
Bothrops lanceolatus	Speech and memory disorders
Embryo suis	Revitalization
Hepar suis	Stimulates hepatic function
Magnesia phosphorica	Inability to think clearly
Phosphoricum acidum	Apathetic, indifferent
Placenta suis	Peripheral circulation disturbances
Selenium metallicum	Mental labor fatigues; great debility
Sulphur	Very forgetful, difficult thinking
Medorrhinum	Weak memory, difficult concentration
Arnica montana, radix	Indifferent, delirious

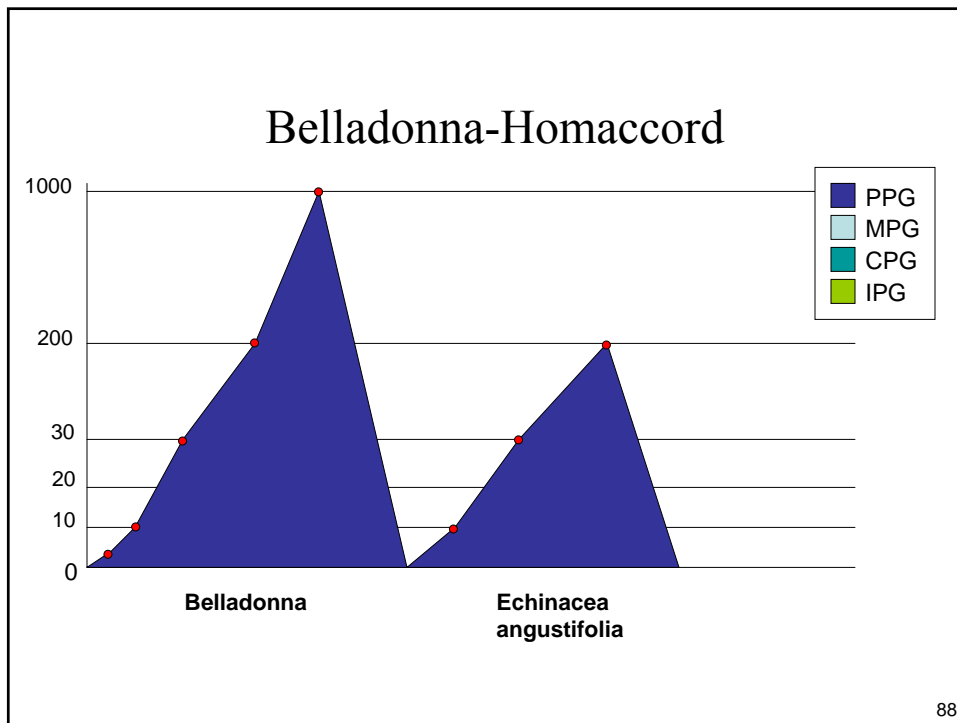
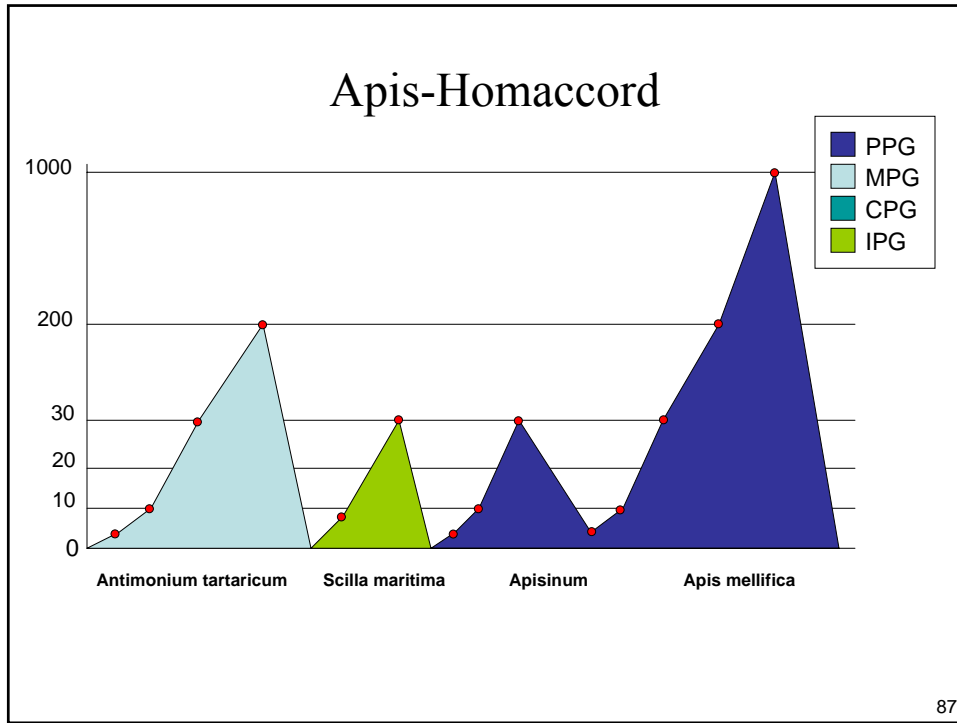
84



Valerianaheel

Ingredients	Characteristics
Valeriana officinalis 2X	over-sensitiveness; restlessness; insomnia
Picricum acidum 6X	heavy tired feeling; muscular debility; nervous exhaustion
Prunus spinosa 2X	severe eye pain; anxious, short respiration
Humulus lupulus 2X	day-time drowsiness; insomnia
Hypericum perforatum 3X	nerve injuries; melancholy
Melissa officinalis 2X	nerve tonic; sedative
Avena sativa 2X	nervous exhaustion; debility after illness
Chamomilla 2X	whining restlessness; anxious, frightened dreams
Ammonium bromatum 2X	constrictive headache; nocturnal spasmodic cough
Kali bromatum 2X	extreme drowsiness; restless sleep
Natrum bromatum 2X	sleeplessness; restlessness

86



Clinical tips for parents

Stool:

- Sesame seeds are worm eggs (ascaris) requires repeated courses of tx with Biltricide (take stool apart with stick from time to time to look for worm eggs)
- Apple seeds are tape worm eggs (treat with Albendazole). In boys: episodes of crazy behavior, often self destructive, is a sure sign of worm infestation (larvae often in brain). In girls: severe mood swings, if they are too tame and too easily steered, not enough own will (same cause)
- Light color: decreased bile flow and decreased detoxification via liver: increase Hepar comp or cilantro. Try dandelion with food (pick the older bitter leaves in your garden). Stop pushing detox agents that mainly use the liver as exit point (DMSA)
- Bloating is often a liver sign
- Diarrhea: often sign of overflow constipation (bypass phenomenon) try arsenicum album 30C from local health food store, Probiotics, change of food regime, Nux vomica (Heel) and Hepar comp, consider parasite regimen
- Chocolate pudding stool: enterocolitis (=infection) – check for measles, chlostridia, giardia and treat accordingly

89

Clinical tips for parents

Urine:

- Colorless urine: the kidneys are ‘plugged up’. Stop detox regime for a few days. Increase fluid intake and Berberis comp. Find practitioner who uses neural therapy (segmental treatment over kidney)
- Monitor specific weight (buy strips from Walgreens): if on the heavy side, procede with detox, if on the light side: go slow
- Low back pain and recurrent bladder infections are a sign that the program is working the kidneys too hard (not enough drainage support). Use D-mannose for recurrent infections (1 tsp q 4-6 h till resolved)

90

Clinical tips for parents

- **Odors:** complete list in “DAN!2005 Physician’s Training Manual (619-281- 7165) page 8

91

Clinical tips for parents

Magnesium deficiency (even if high dose is given) – list by Sid Baker MD

- Muscle cramps and twitches (can also be copper deficiency! if Mag fails, try homeopathic cuprum met 12 X several times/day: you have used too much zinc and depleted the copper stores)
- Constipation
- Lump in throat
- Sensitivity to loud noise and high pitched sounds
- Cold hands and feet
- Insomnia (try also homeopathic Valerian Heel) or Mag Phos 6 X at bedtime)
- Carbohydrate cravings and intolerance (also chromium/vanadium – try herbal extract of gymnema)
- Numbness and tingling
- Cannot take deep breath

92

Clinical tips for parents

Magnesium deficiency

Generalized **abdominal tenderness**, palpable hardened small bowel loops: giardia (good stool test will show it, DiagnosTech in Seattle)

- Treat with Tinidazole 250-500 mg bid for 10 days
- Followed by 6 month course of freeze dried garlic 1-2 cap after each meal
- Nux vomica-Homaccord (Heel) to detoxify drug residues

93

Clinical tips for parents

Seizures: herpes virus (HSV-1, VZ or HHV-6) in brain inside Hg deposit: use finger acupressure (Y.Omura) to increase uptake of Hg detox meds and antivirals in affected area

- Check for Electrosmog in sleeping glocation
- Use high dose B-6 (see above) or medical drugs (Lamictal or Valproate) until underlying cause is resolved (usually about 1 year of detox)

94

Clinical tips for parents

Child holding lower abdomen: pain

Headaches: have experienced dentist or D.O. check the dental occlusion

– Cilantro tea at bedtime (10 drops in hot water, BioPure)

Recurrent ear infections/sinusitis: consider reflux at night (GERD).

– Eat earlier and lighter for dinner

– Heel Nux Vomica homaccord at bedtime

– Cranio-sacral therapy (re-sets vagus nerve)

– KMT lymphatic drainage

Skin symptoms: family constellation (unresolved shame in family history, etc.)

95

